



Henry Ford Cancer Institute

Steven N. Kalkanis MD
Medical Director

Spencer C. Hoover
VP and Executive Director

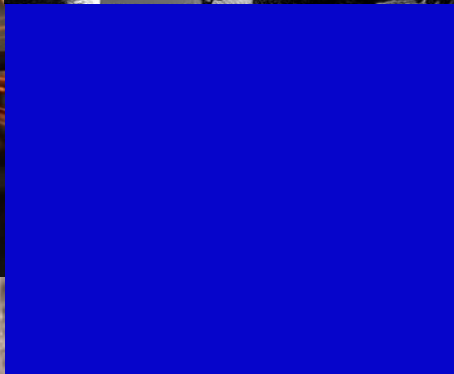


HENRY FORD CANCER INSTITUTE

BRIGITTE HARRIS CANCER PAVILION

2HU 873

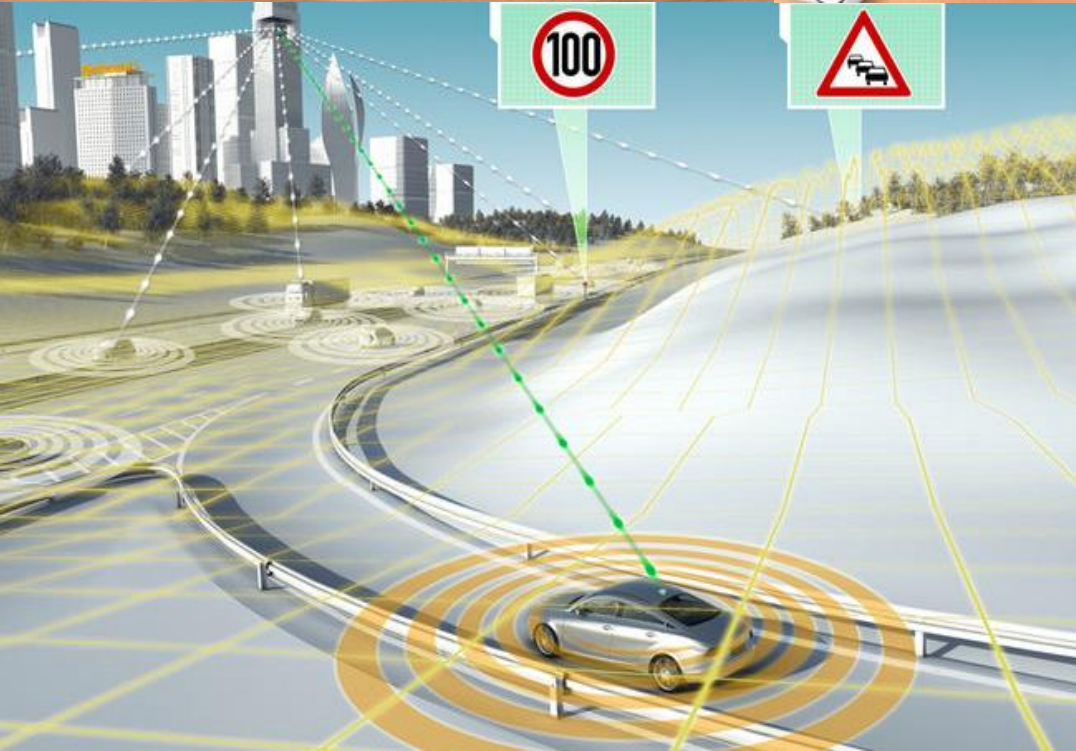
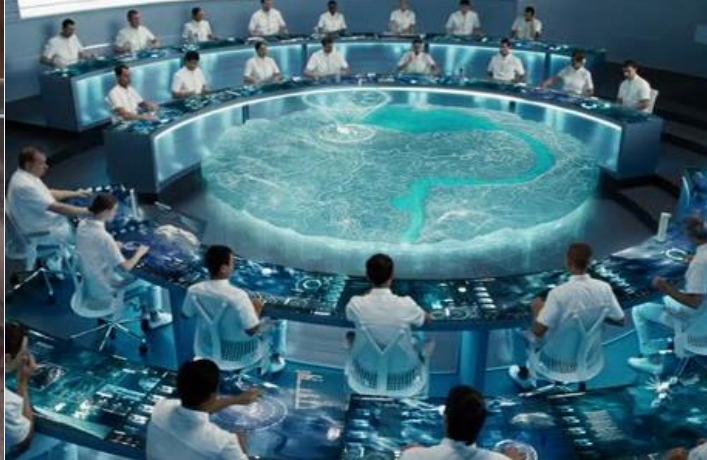




confidence

Trust
Strength
Safe





innovation

Cutting Edge
Team
Fight
Mission



Inviting
Warm
Comfortable
Multi-generational
Compassionate
Community



humanism



healing

Soothing
Respite
Whole
Serene
Peaceful

BUILDING PROJECT GOALS

- World Class Leader in Cancer Care
- State-of-the-art, Patient Centered
- Multidisciplinary and Fully Integrated Cancer Care and Research Programs
- Located on South Campus and Integrated into the Community
- Represents: Hope, Confidence, Innovation, Humanistic, and Healing



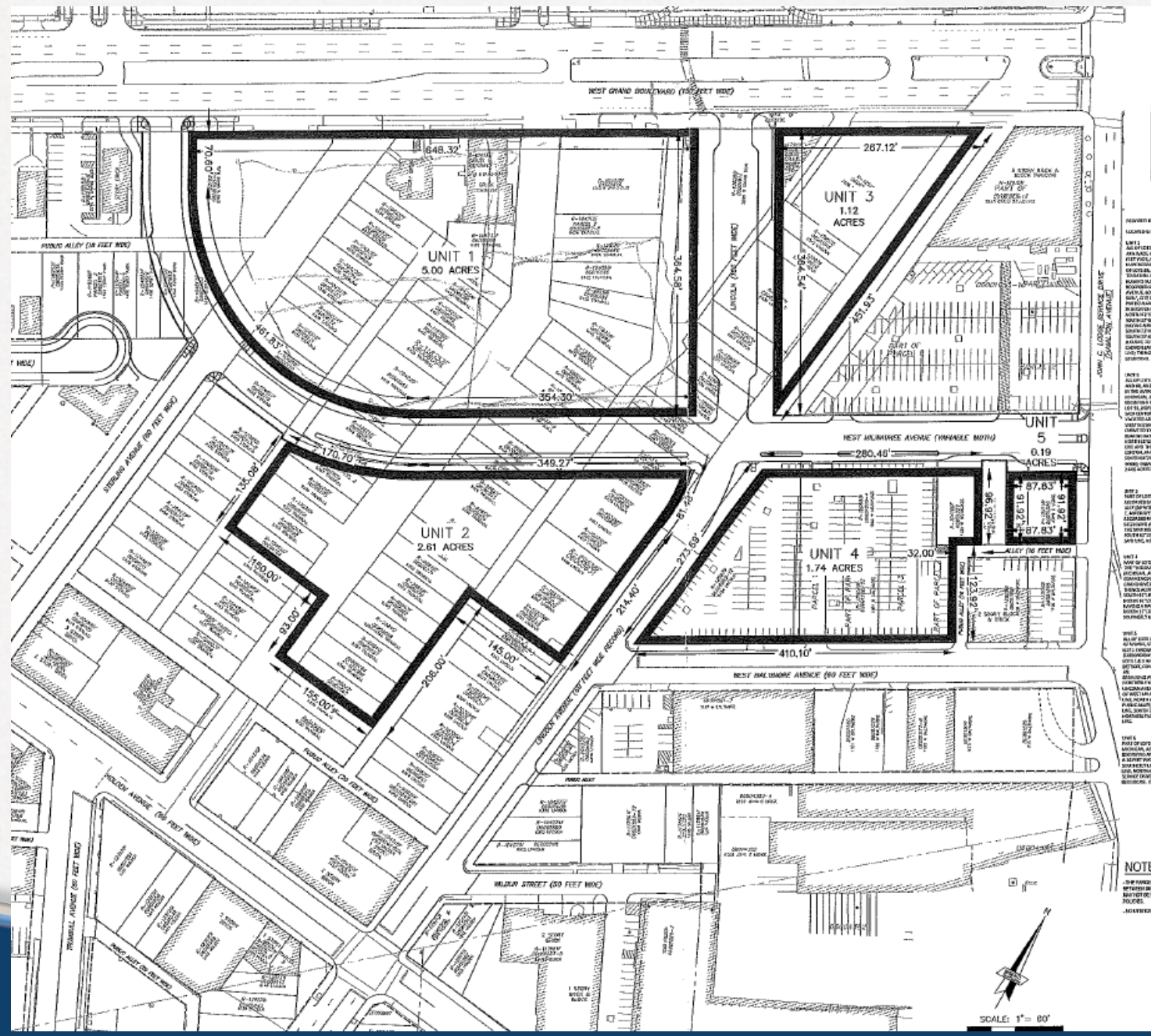
West Grand Boulevard



Rehab Hospital



Holden



Lincoln



Milwaukee

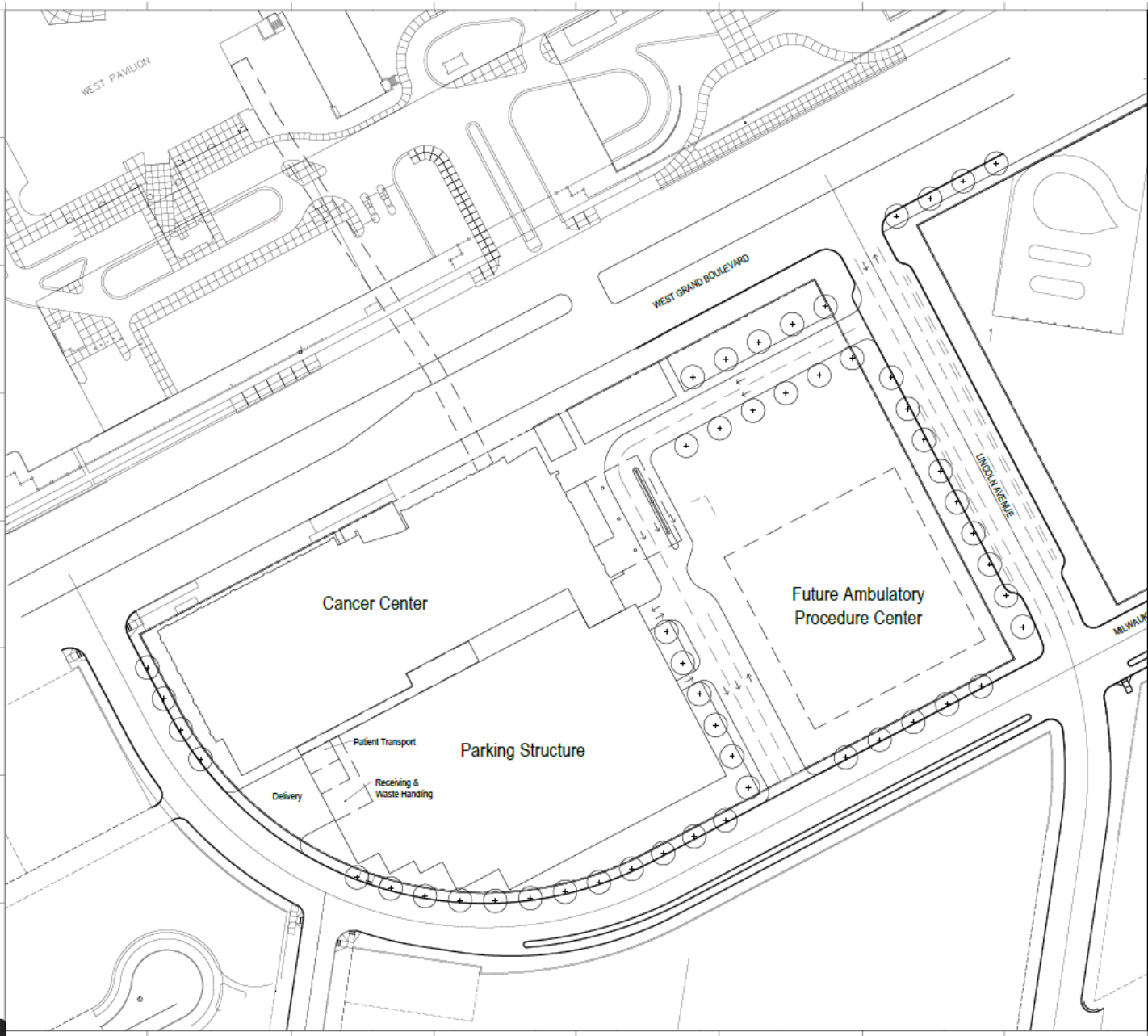


all for you



HENRY FORD CANCER INSTITUTE





West Pavilion



KFC



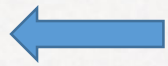
Main Entrance



HAP Building



L Shape Entrance Drive



New Road – Lincoln
Boulevard with Trees



New Road – Milwaukee

all for you



HENRY FORD
CANCER INSTITUTE

Patient Parking Deck

- About 725 spots
- Cost for 1 above ground parking spot in a deck = \$22,000
- Modest Parking Fee with Vouchering – details to be determined
- Areas designated for
 - Radiation Treatment
 - Chemotherapy
 - Cancer Urgent Care
 - Outpatient Blood Draw
- Parking Structure is for Patients on the South Campus
 - Cancer Pavilion
 - Other Clinical Buildings
 - Rehab Hospital
 - Ambulatory Procedure Center

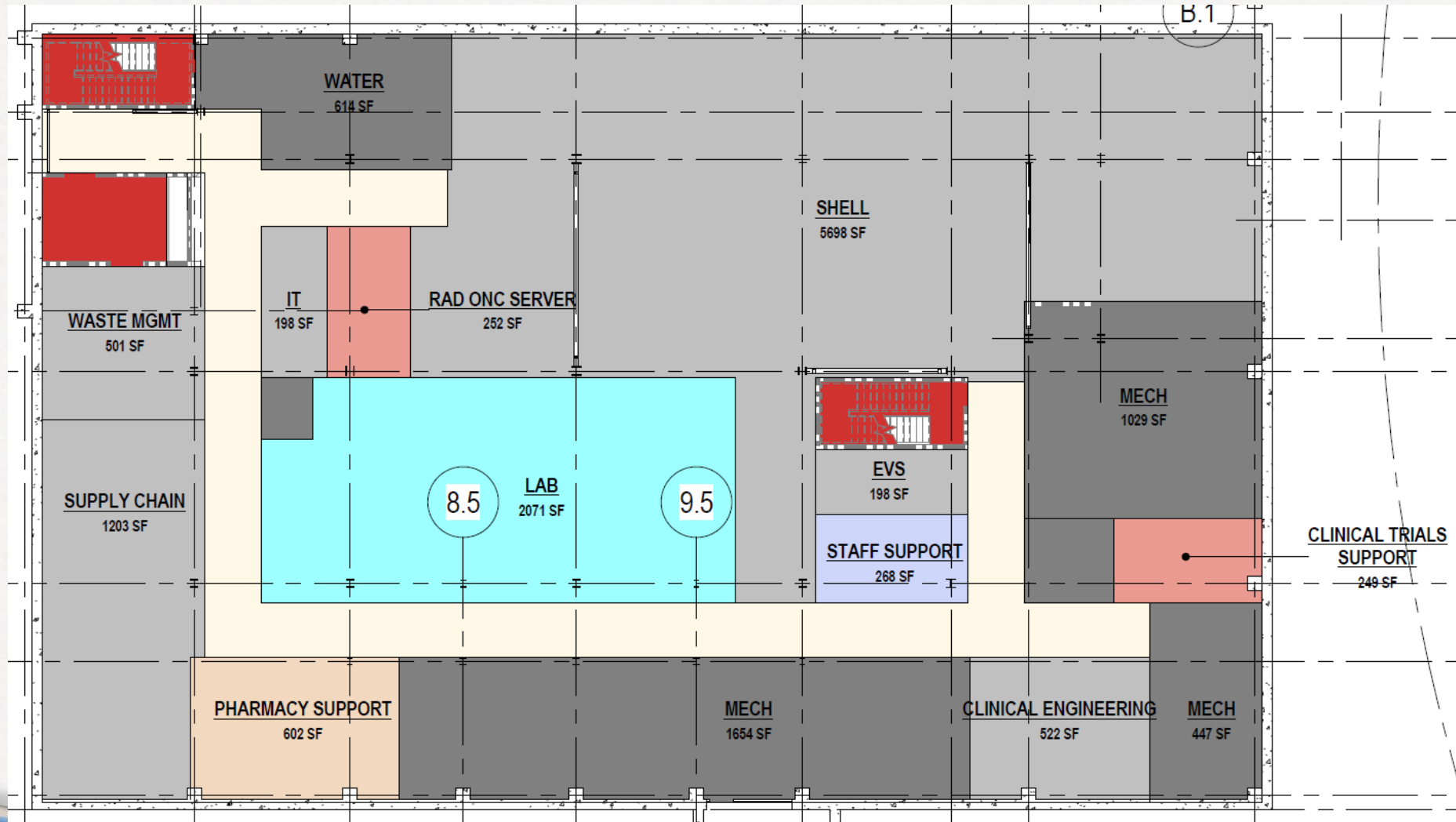


HENRY FORD CANCER INSTITUTE

BRIGITTE HARRIS CANCER PAVILION

2HU 873

Basement



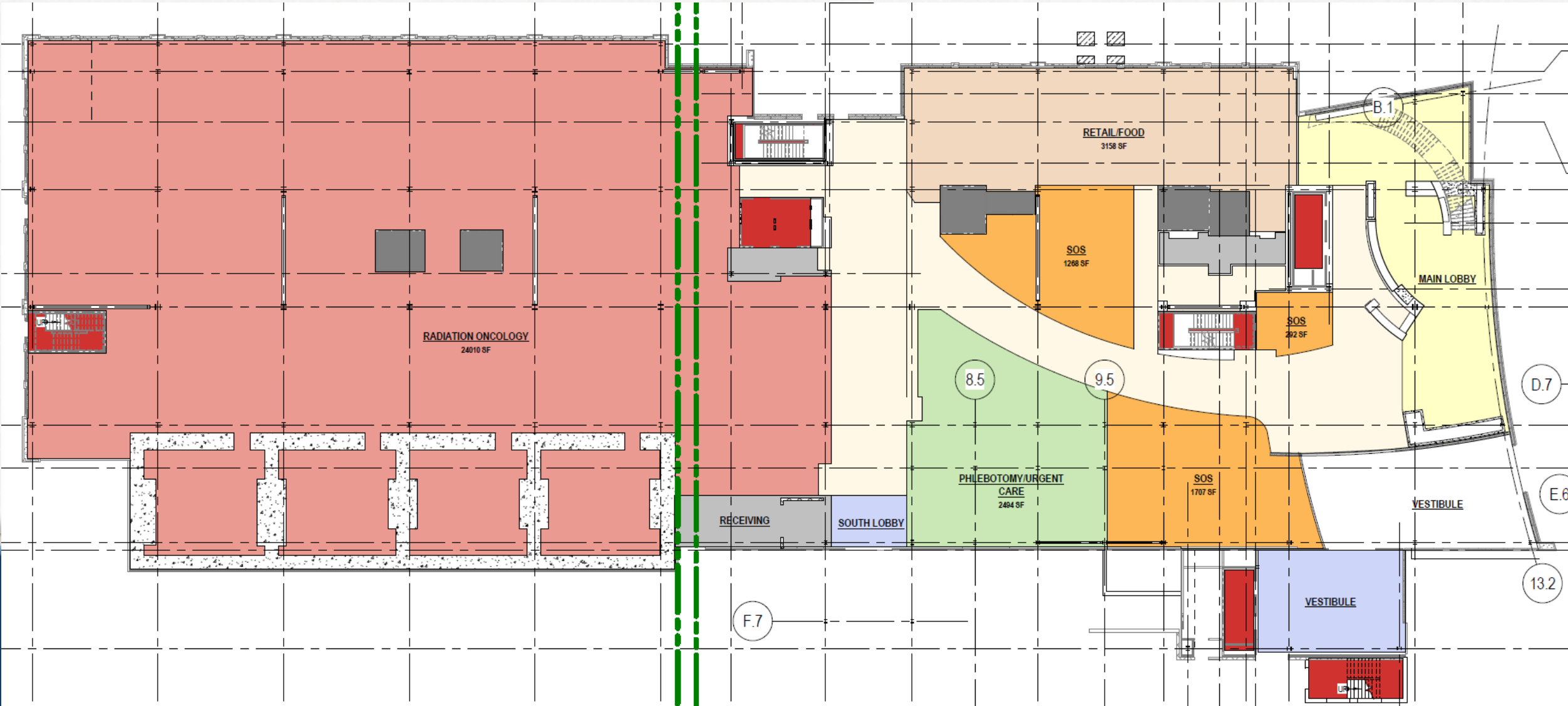
Basement

- Honoring Patient Feedback, there will be no patient care in basement
- Rapid Response Lab
 - Tube System integrated in the Sky Walk to the Core Lab on K-6, 55 mph
 - Tube System from Rapid Response Lab up throughout the building
 - Collaborative Service Menu built with physicians & laboratory medicine
 - 30 minute stat menu
 - 31 min – 2 hour menu
 - Not needed in 2 hours – tubed to the Core Lab at HFH
- Building Services
 - Clinical Engineering, Supply Chain Management, Environmental Services, Waste Removal – multiple streams

Space Planning Concepts

- 300+ ft long ... about 7 floors of K Building ... North Campus = 3 million sf
- 187,000 sf – funding for & opening at 145,000 sf (5% of North Campus)
- Cancer Pavilion spaces used all day everyday
- Disease Clinics have a home, but not exclusively theirs
- Care Rooms – larger than Exam, comfortable seating for 7 - Consult Hybrid
- Interventional Radiology staying at HFH
- No General Anesthesia
- On Stage / Off Stage spaces for staff & materials
- Large Windows and natural light brought deep in to each floor
- Shell Space – 1st bump of growth – 2023/2025ish

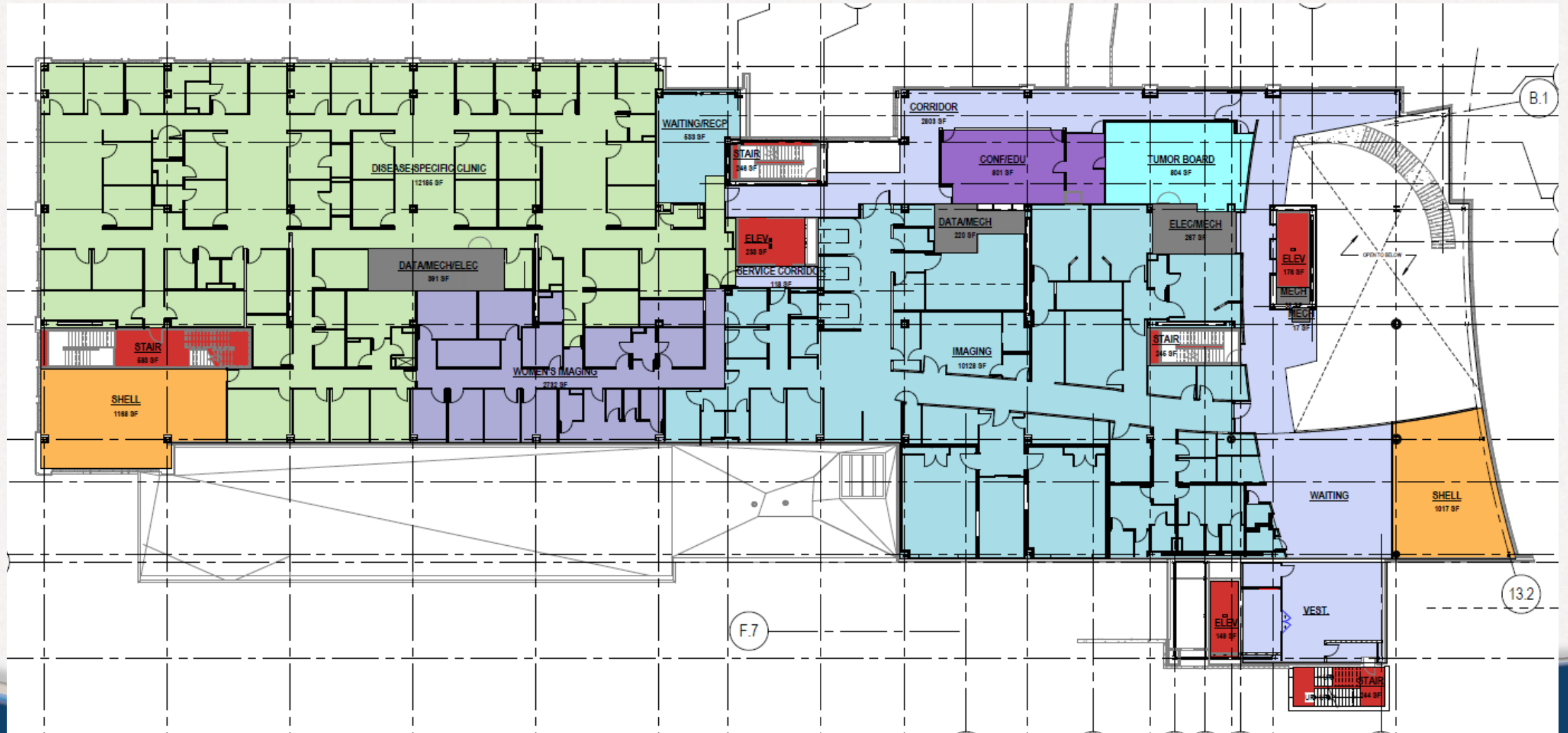
1st Floor



1st Floor

- Curves - East Wall and Central Walk Way
- Curb Side Drop Off, Valet & Self Park. Also South Lobby entrance
- 2 Story Atrium Lobby, Floating curved staircase to 2nd floor
- Supportive Oncology Services
 - Quiet Reflection, Acupuncture, Massage, Functional Medicine, ExCite Exercise Center, Resource Center, Demonstration Kitchen, Group Activity Room
- Retail – Coffee, Lunch/Deli, Pharmacy, Pocket Park & Patient Products
- Radiation Oncology
 - 4 Linear Accelerator Vaults with Structural Piling for 5th Vault
 - 2nd ViewRay MRIdian, New Truebeam, Moving a Truebeam and Edge
 - Inpatients across Sky Walk on a daily basis, intentional travel patterns
 - Entire Rad Onc team moves from North Campus, except full time researchers
 - 15 Clinic Rooms, 2 Consult Rooms

2nd Floor

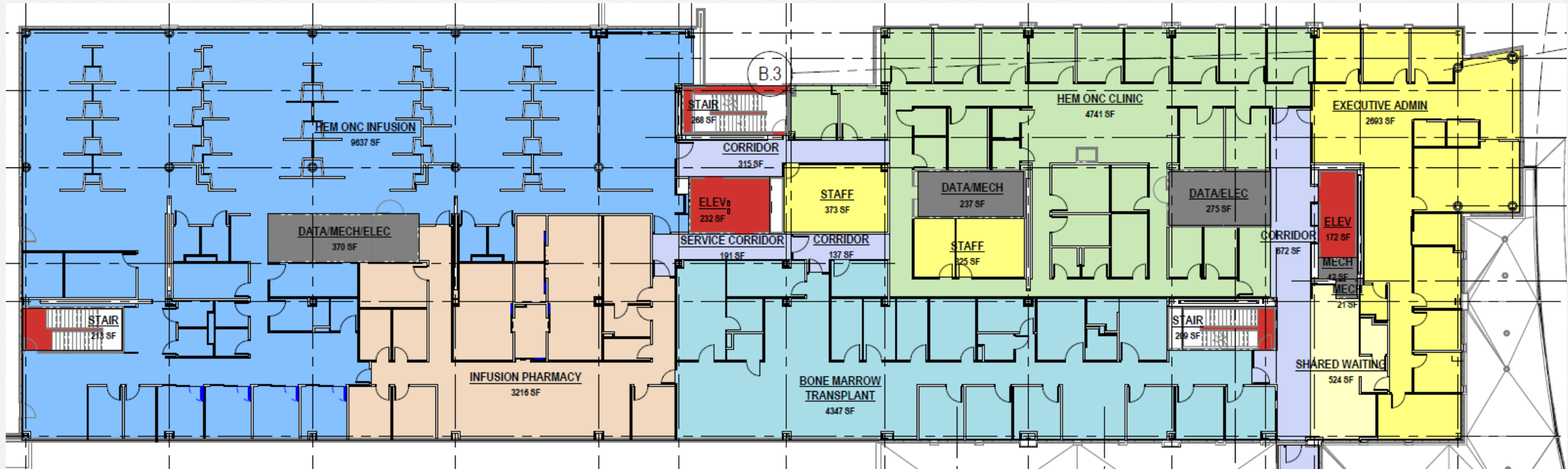


all for you

2nd Floor

- Direct Access from Parking Deck
- Curve public walk way & open to Atrium; landing for floating stairs
- Tumor Board
- Sky Walk connects between P2 and I2
- Diagnostic Imaging
 - HFHS 1st Installed PET / CT
 - MRI
 - Fluoroscopy as well as CT, Ultrasound and X-Ray
- Breast Imaging – Relocating from New Center One
- Disease Specific Clinics
 - 24 Care Rooms in pods of 6
 - 4 Clinical Team Collaboration Rooms & Nurse Stations, 1 per pod
 - 2 Minor Procedure Rooms
 - 6 Consult Rooms
 - 2 Family Huddle Spaces

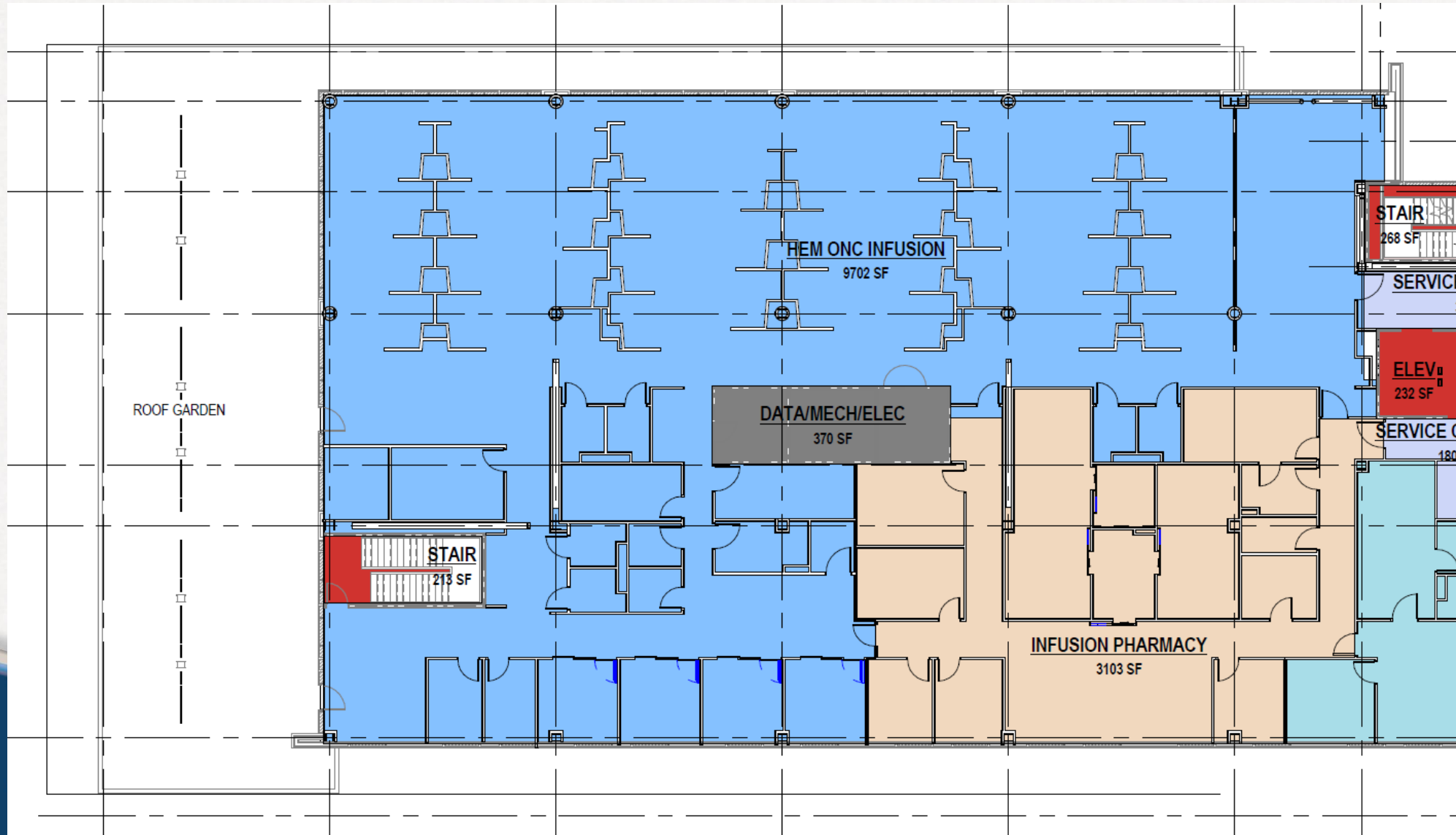
3rd Floor



3rd Floor

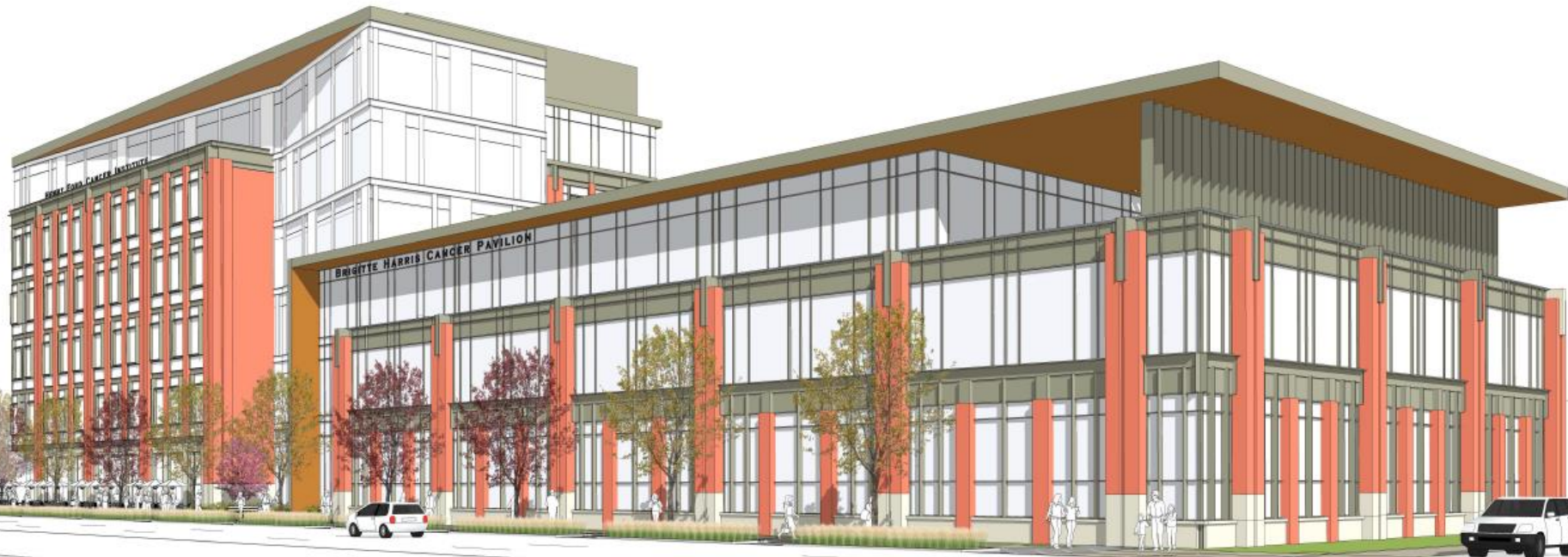
- Hem Onc Clinic
 - 9 Care Rooms, 4 Consult Rooms
 - Minor Procedure Room
 - Hermes Lab
 - Non-Cancer Hematology Diseases
- Bone Marrow Transplant Clinic
 - 8 Care Rooms, 2 with Beds and Toilets
 - 3 Apheresis and ECP Bays with Stretchers
 - 3 Infusion Bays
- Infusion Center
 - 36 Semi Private Infusion Bays
 - Organized in physically distinct neighborhoods
 - 4 Private Infusion Rooms with Stretchers
 - 40 Patient Positions in Total
- Compounding Pharmacy
- Investigational Drug Service
- HFCl Executive Administration

Infusion Center & Roof Garden

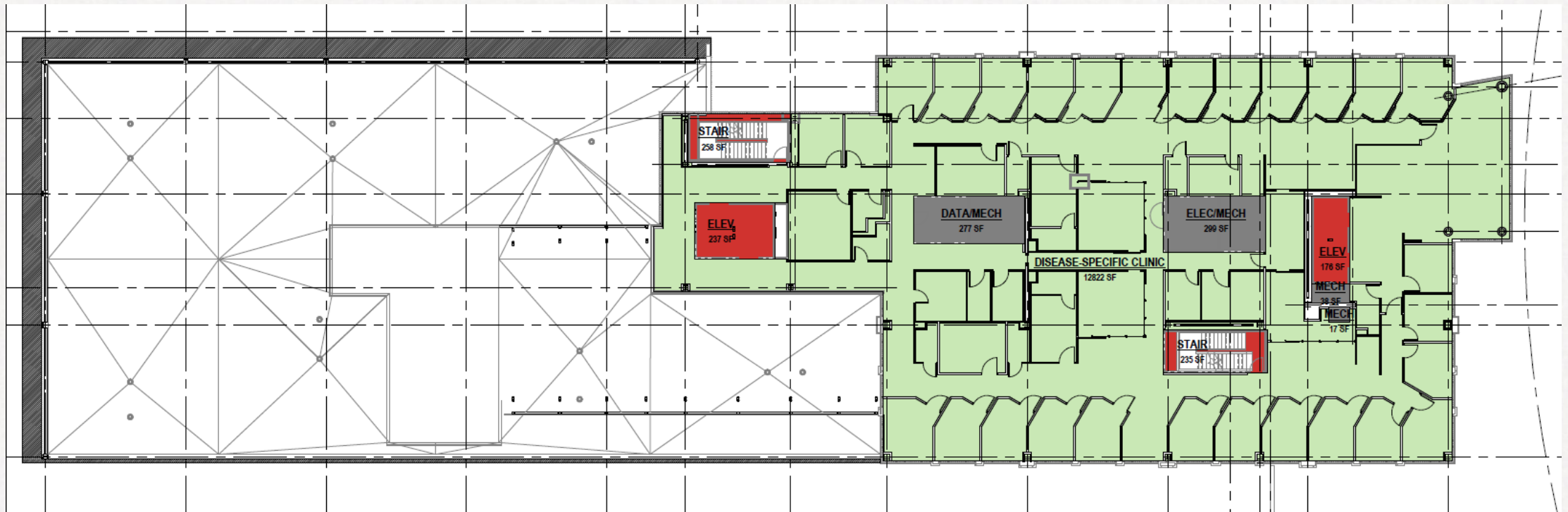


Infusion Center & Roof Garden

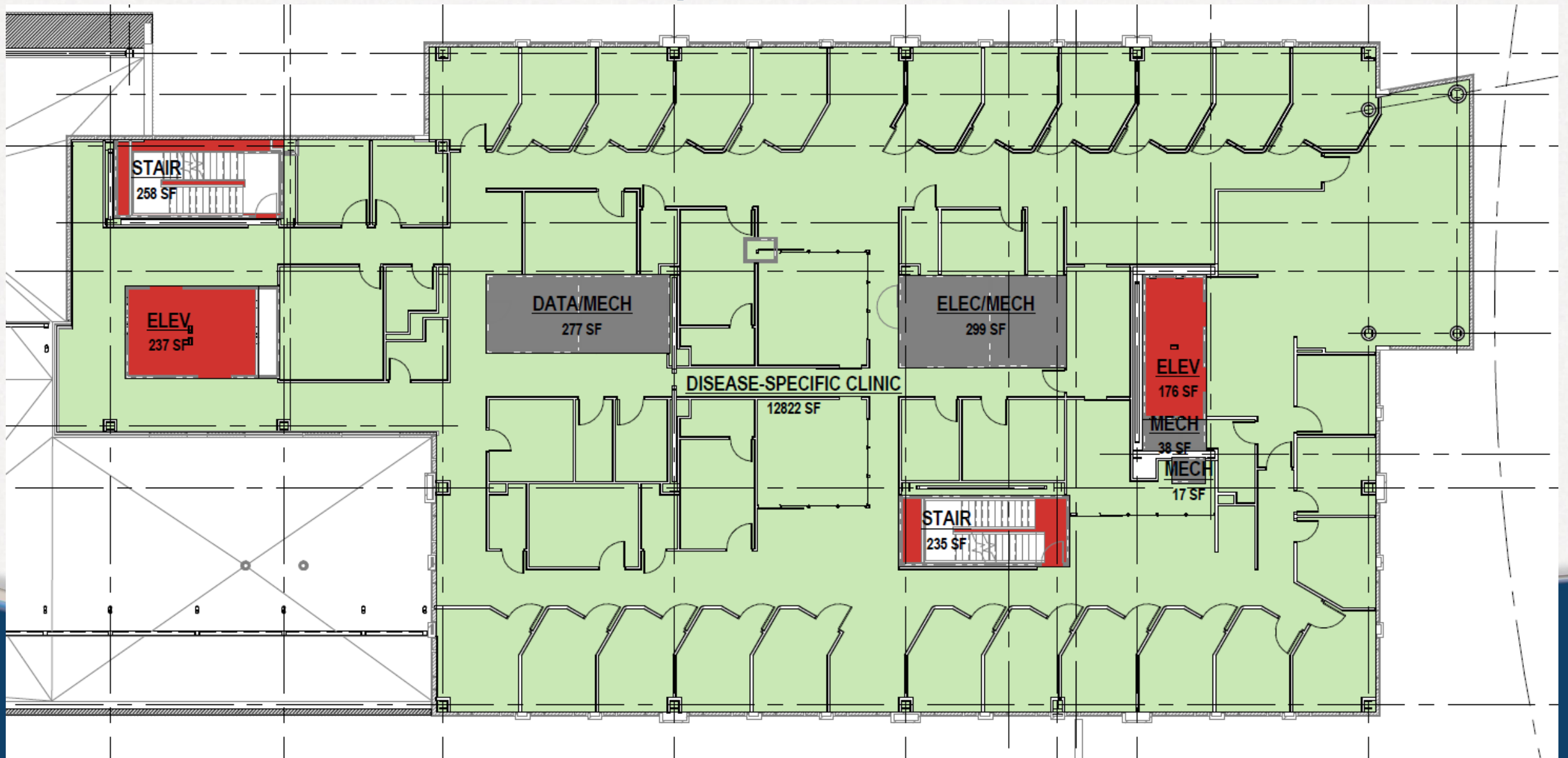
- Roof Garden
 - Planting & Sculpture Ledge – view only
 - Roof Garden open to Patients and Staff
 - Air Intake and Exhaust
- Infusion Center
 - 4 Full Neighborhoods
 - 2 Small Neighborhoods
 - Family & Patient Lounges
 - Patient Control of Lighting, a window view for every patient
 - A clear line of sight for nurses to their patients



4th Floor



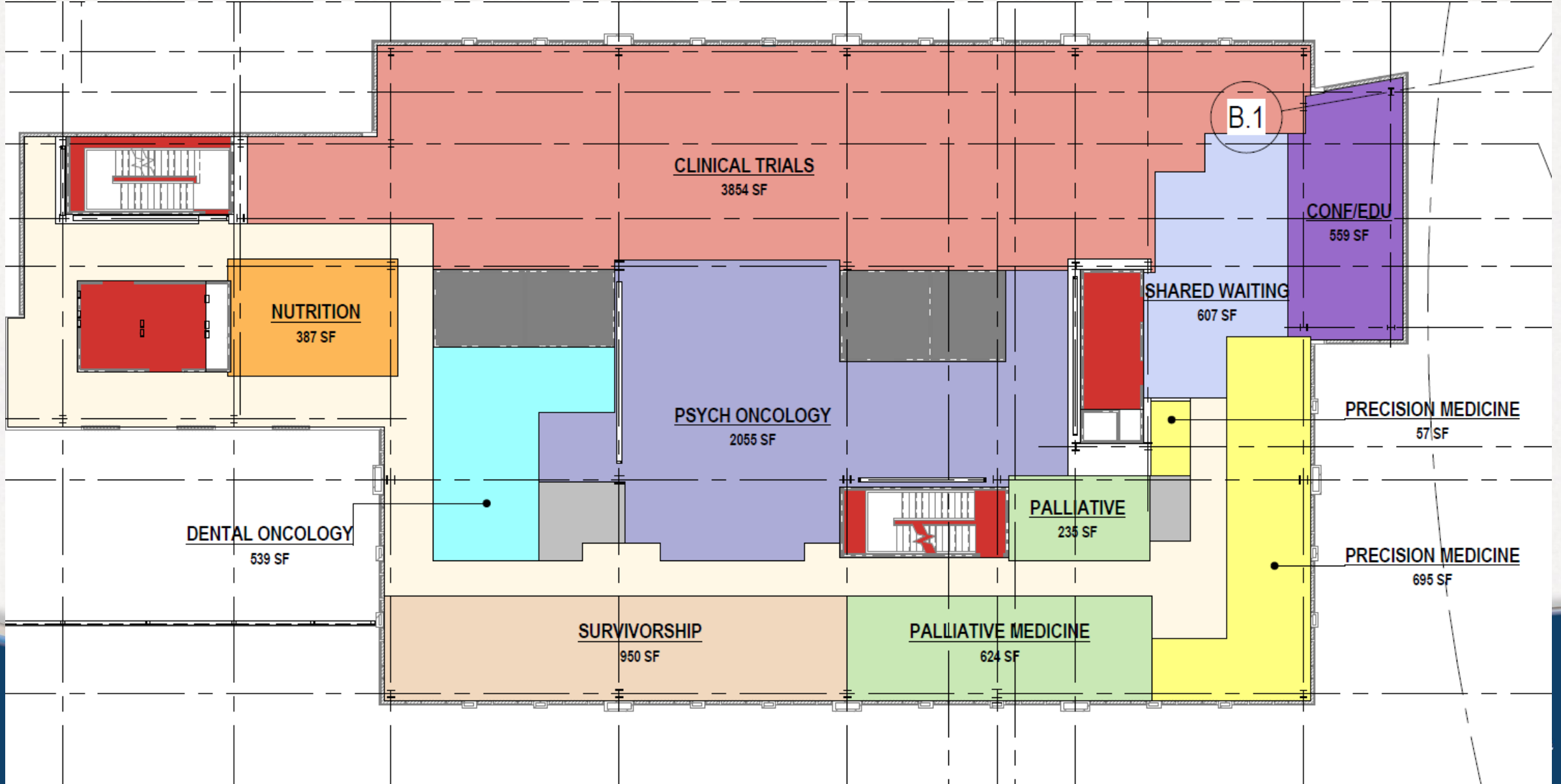
4th Floor



4th Floor – Disease Specific Clinics

- 24 Care Rooms in pods of 6
- 4 Clinical Team Collaboration Rooms & Nurse Stations, 1 per pod
- 2 Minor Procedure Rooms
- 2 Family Huddle Spaces

5th floor



5th Floor

- Clinical Trials Office – Patient Facing Team – Off Stage Space
- Precision Medicine, including Genetic Counselors
- Nutrition Team
- Dental Oncology – Maxillofacial Prosthodontist
- Survivorship Clinic
- Palliative Medicine & Pain Management Clinic
- Social Workers
- Financial Navigators
- Behavioral Health Team

6th Floor



6th Floor

- Not Currently Funded
- Strong Executive & Physician Leadership Consensus on the need
- Revenue Generating: Telemedicine and Radiation Treatment Planning
- Physician's Lounge
- Physician Offices
 - Hem Onc
 - Rad Onc
 - Condos by Surgical Specialty
- Physician Secretaries

Conference Rooms & Staff Lounges

■ Conference Rooms

- 5 in Departments
 - 1 in 1st floor Rad Onc
 - 2 in 2nd floor Disease Specific Clinic
 - 2 in 3rd floor Exec Admin
- 5 for Building Wide Use
 - 2 on 2nd floor
 - 1 on 3rd floor
 - 2 on 5th floor
 - (+ 1st floor SOS patient programming multipurpose room)

■ Staff Lounges

- 2 in Basement
- 1 on 1st floor
- 2 on 2nd floor
- 1 on 3rd floor
- 1 on 4th floor
- 1 on 6th floor

■ Staff Showers

- 2 on the 4th Floor

Construction Schedule Overview

- **Infrastructure Demolition:** Mid April 2017 to Early Aug 2017
- **Earth Retention & Cancer Ctr. Basement Excavation:** Starts Early Aug 2017
- **Caisson Foundations:** Starts Early October 2017
- **Structural Steel Placement:** Starts Early January 2018
- **Structural Steel Topping Out:** Mid April 2018
- **Envelop Water Tight:** Complete by Mid May 2019
- **Interior Build Out:** Complete by End Feb 2020
- **Cancer Center Opening:** Mid April 2020

Next Phase - Design Development

- Design Development, an architecture and construction construct, is moving beyond floor plans to the elevation of every wall in every room.
- During Design Development, we finalize the placement of walls, the width and swing of doors, the location of fixed and wall mounted equipment, light switches and electrical outlets, and the size and location of sinks and millwork (mounted cabinets, desks & counters)
- During Design Development we also do “Butts in Chairs” to ensure staff have the type of work space they need
- IT begins meeting with departments on computers and work flow

Timeframe Estimates

- Design Development runs through September 2017
- October – December 2017: Architects are heads down creating Construction Documents with mechanical, electrical, plumbing & “nitty gritty” detail
- Operations Team Convening: will meet now through 2020
- Clinical Equipment, IT Equipment and Furniture: 2018 & 2019
- Orchestrate & Execute Moves, including 2 Linear Accelerators
- Open for Patient Care 2nd Quarter 2020

Henry Ford
HEALTH SYSTEM
**HENRY FORD
CANCER INSTITUTE**



all for you